



EURO PROFILE CYLINDER LOCK AND LOCK BODY

LOCKS BASIC

In India generally lock security is associated only with how difficult it is to duplicate the key which is completely wrong. Internationally a mechanical lock's security level is determined on following factors:-

- * Number of key differs
- * How easy it is to duplicate the key or to pick a lock using lock picking tools
- * A locks resistance to Bumping
- * A locks resistance to Drilling & other such tools
- * A locks resistance to Snapping

With respect to above CE/ BSEN grading system has been provided in a catalog on page 10 & 13 for Mortise locks and Euro Cylinder locks respectively

The whole point is to protect the property by delaying the thief in is attempt to get inside the property. We have tried to distinguish our lock offering from level 1 (lower) to level 5 (Highest) based on above standards to make it easy for our customers.

1 Level - 1

It is basic security level for lock can be made of lever pin or wafer mechanism and offers basic security. Safety provided is resistance to Picking . We suggest these locks to be used on internal door where least security is required.

All lock bodies which do not offer any security on there own but are dependent on cylinders are considered as level 1.

2 Level - 2

These locks are more complex in design then level 1 & comes with difficult to duplicate key. Safety provided is resistance to Picking & Bumping*. We suggest these locks to be fitted where security is important .

3 Level - 3

A further evolution of level 2 locks where additional protection against tools such as power drill etc. has been provided. All lock bodies which offer security on there own to attacks by drills or cutters and are not just dependent on cylinders are considered as level 3.

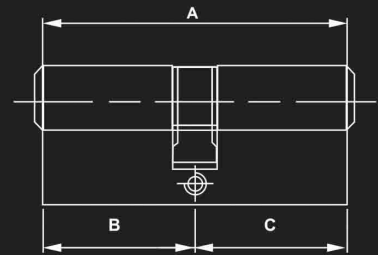
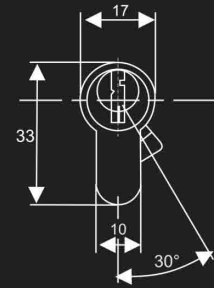
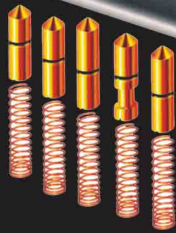
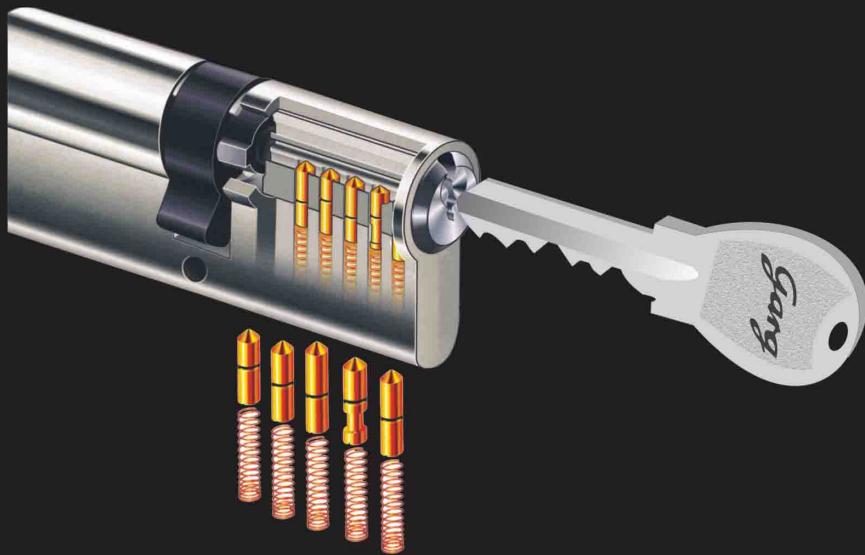
This is the level where as per international norms security begins. We suggest as bare minimum these locks to be fitted on any door where security is important i.e. Master bedrooms & main doors.

4 Level - 4

A highly complex lock where it is practically impossible to pick the lock or create a duplicate key. It is secure against all types of attack known today accept lock snapping. This security level till now was the maximum security offered in India for mechanical locks.

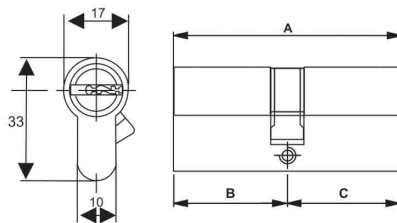
5 Level - 5

A very complex lock where it has been taken care to provide user a save guard against all known possible attacks on lock to ensure maximum safety for his property. This is a Completely secure lock as per international norms & offers the best protection there is available as of date and can be fitted on any doors where security is important. Also this is now the highest security offered in India for mechanical locks, at par with International quality levels.



NORMAL GROOVE SERIES

Normal Euro Profile Cylinder (2C)

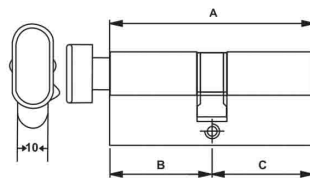


LLEL10..Series

1

A	B	C
60	30	30
70	35	35
80	40	40
90	45	45
100	50	50

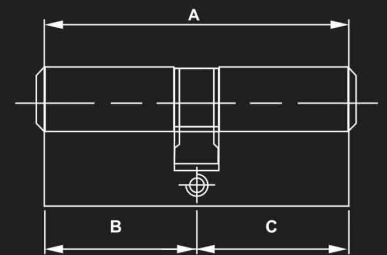
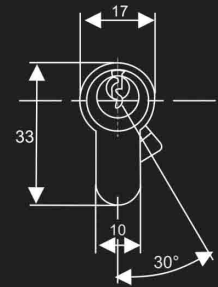
Normal Euro Profile Cylinder With Privacy Function (CK)



LLEL11..Series

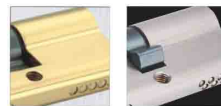
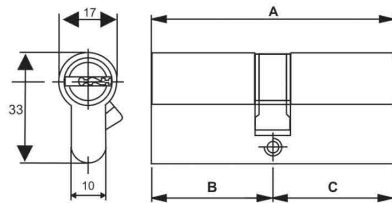
1

A	B	C
60	30	30
70	35	35
80	40	40
90	45	45
100	50	50



COMPUTER GROOVE SERIES

Computer Key Euro Profile Cylinder (2C)

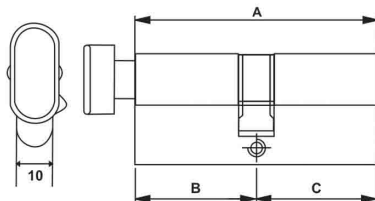


LLEC20..Series

2

A	B	C
60	30	30
70	35	35
80	40	40
90	45	45
100	50	50

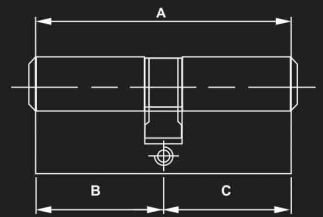
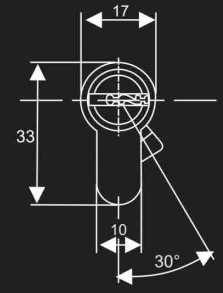
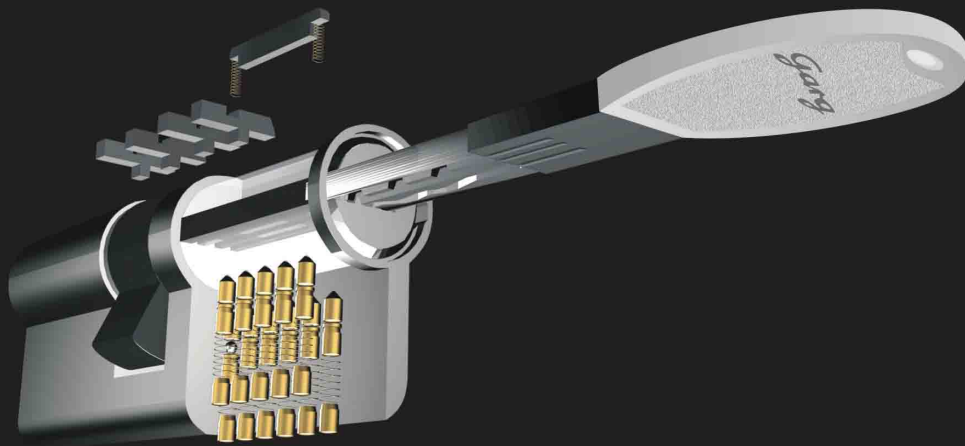
Computer Key Euro Profile Cylinder with Privacy Function(CK)



LLEC21..Series

2

A	B	C
60	30	30
70	35	35
80	40	40
90	45	45
100	50	50



COMPUTER KEY WITH SNAKE SHAPED GROOVE SERIES

Euro Profile Lock Cylinder (2C)

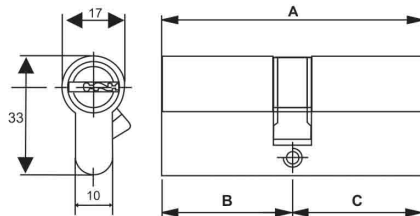
2

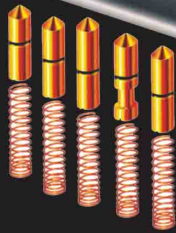
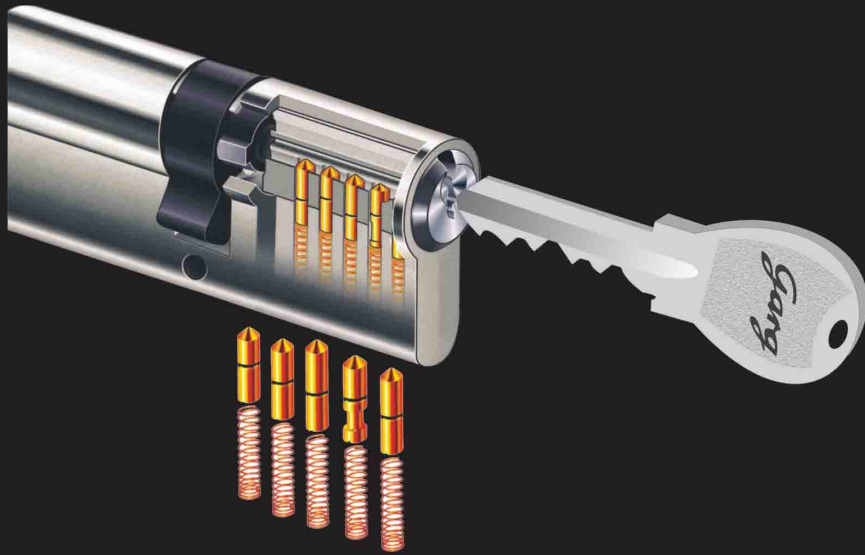


A	B	C
60	30	30
70	35	35

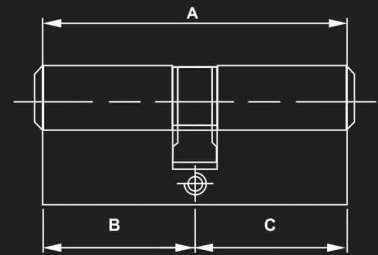
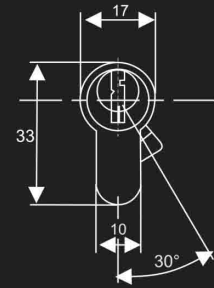


LLES00..Series





NORMAL GROOVE SERIES



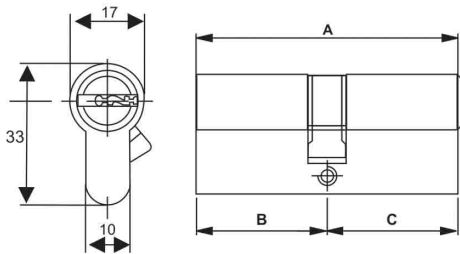
Normal Euro Profile Cylinder (2C)

2



LLEL20.. Series

A	B	C
60	30	30
70	35	35
80	40	40
90	45	45
100	50	50



Features :

*** DRILL RESISTANT**

*** BUMP RESISTANT**

*** PICK RESISTANT**

A NORMAL KEY CYLINDER BECAUSE OF ITS ABILITY TO WITHSTAND DRILL ATTACK SHOULD BE IN LEVEL 3 SECURITY , HOWEVER AS IT IS EASY TO DUPLICATE ITS KEY IT IS CONSIDERED A LEVEL 2 SECURITY LOCKS

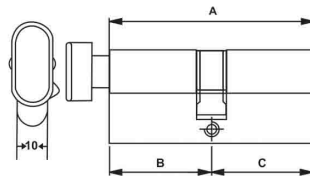
MK, GMK AVAILABLE ON REQUEST

Normal Euro Profile Cylinder With Privacy Function (CK)

2



LLEL21.. Series



A	B	C
60	30	30
70	35	35
80	40	40
90	45	45
100	50	50

Features :

*** DRILL RESISTANT**

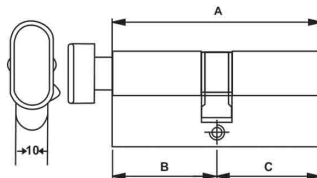
*** BUMP RESISTANT**

*** PICK RESISTANT**

Privacy Function Euro Profile Cylinder



LLEL31.. Series

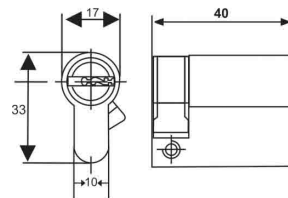


A	B	C
60	30	30
70	35	35

Half Cylinder

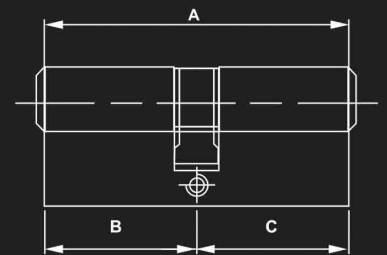
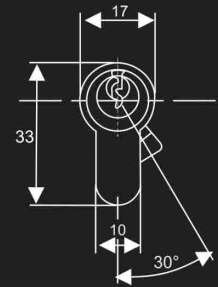


LLEL35..Series
LLEL36..Series



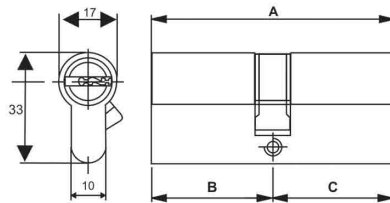
1

MK, GMK AVAILABLE ON REQUEST



COMPUTER GROOVE SERIES

Computer Key Euro Profile Cylinder (2C)

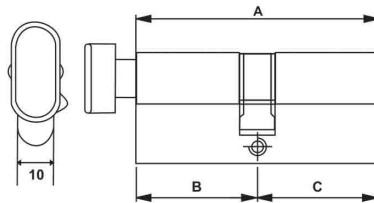
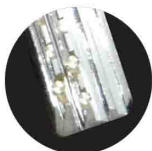


LLEC40.. Series

3

A	B	C
50	25	25
60	30	30
70	35	35
80	40	40
90	45	45
100	50	50

Computer Key Euro Profile Cylinder with Privacy Function(CK)



LLEC41.. Series

3

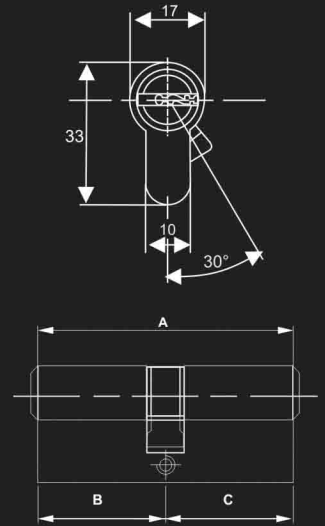
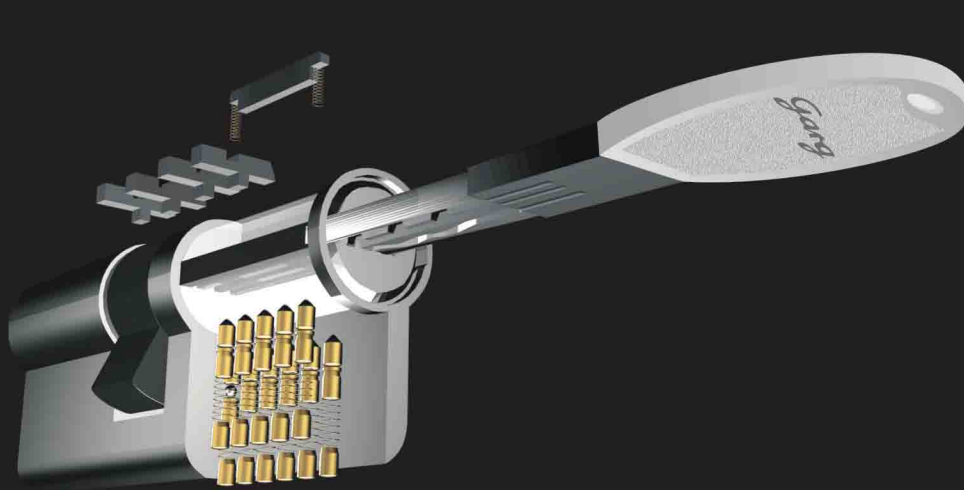
A	B	C
50	25	25
60	30	30
70	35	35
80	40	40
90	45	45
100	50	50

Features :

* DRILL RESISTANT

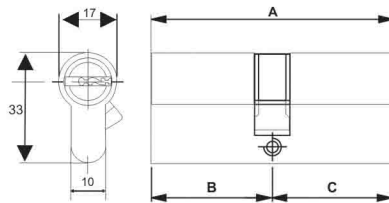
* BUMP RESISTANT

* PICK RESISTANT



COMPUTER KEY WITH SNAKE SHAPED GROOVE SERIES

Euro Profile Lock Cylinder (2C)



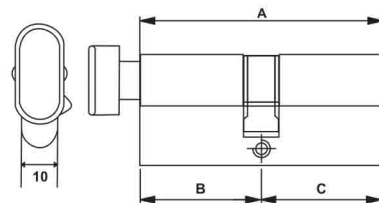
3

A	B	C
60	30	30
70	35	35

LLES07.. Series



Euro Profile Cylinder (CK)



3

A	B	C
60	30	30
70	35	35

LLES08.. Series



Features :

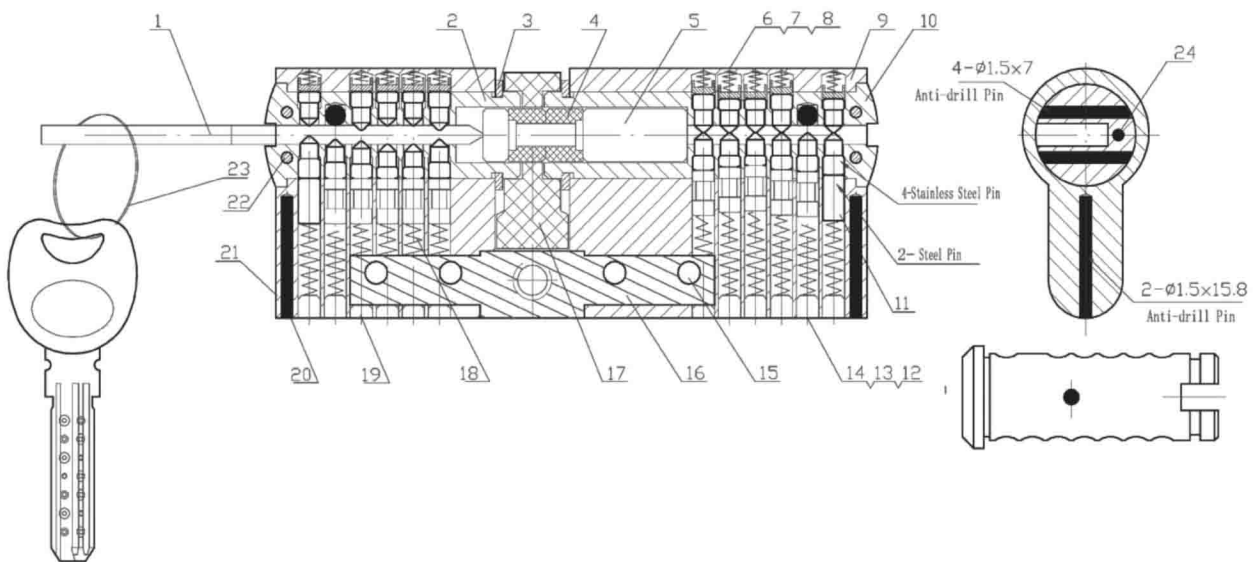
* DRILL RESISTANT

* BUMP RESISTANT

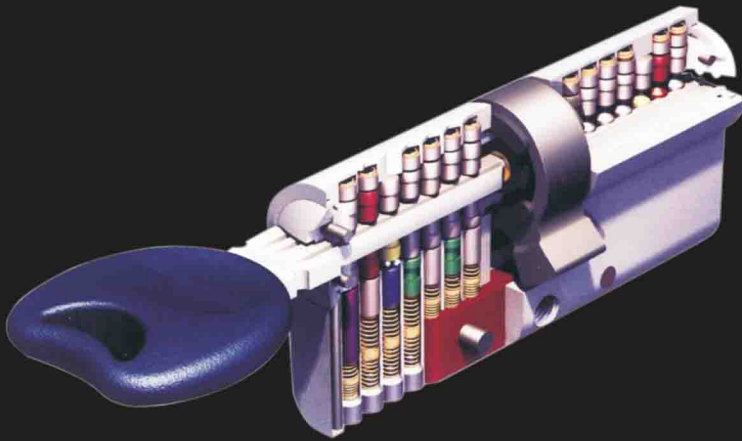
* PICK RESISTANT

INTRODUCING FIRST TIME IN INDIA

- ANTI DRILL
- ANTI PICK
- ANTI SNAP
- ANTI BUMP



S.No	Name	S.No	Name
1	Key	13	Key Ring
2	Cylinder Case	14	Anti-drill pin Ø1.5x7
3	Clip	15	Cylinder case
4	Gear Parts	16	Anti-drill pin Ø1.5x5.8
5	Clutch pad	17	Cover Pin
6	Short Spring	18	Long Spring
7	Short Pin	19	Cam
8	Key code Pin A	20	Connection Part
9	Cylinder Case A	21	Cylinder Case Rivet
10	Cylinder Case	22	Anti-pick Pin
11	Long Pin	23	Long Spring
12	Ball Pin Ø2.0	24	Cover Pin



HIGH SECURITY CYLINDER



DRILL RESISTANCE
a) 2 steel insert into the plug
b) 1 steel insert into the cylinder
c) 1 steel driver pin
d) 2 steel pins



AB KEYS
Use 2 steel balls to make the AB keys, which can prevent the decoration worker to duplicate the key



SNAP RESISTANCE
The armor plate makes the cylinder more solid



PICKING & BUMPING RESISTANCE
e) special shape of key pin
f) 2 deformed driver pins

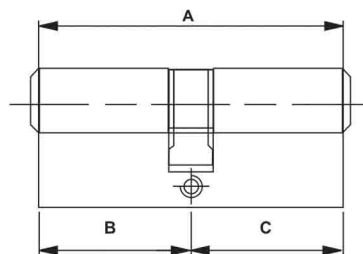
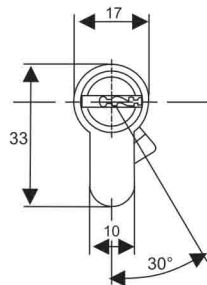
5



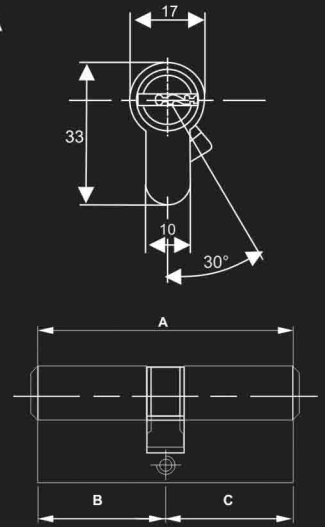
A	B	C
62	31	31
70	35	35



LLEQ00.. Series



INTRODUCING FIRST TIME IN INDIA



HIGH SECURITY PIN IN PIN CYLINDER

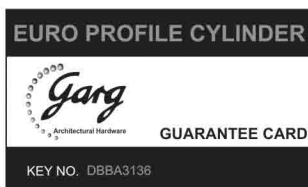
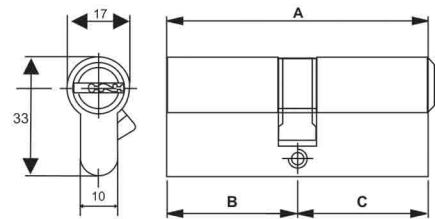
Euro Profile Lock Cylinder (2C)

4



LLEH00.. Series

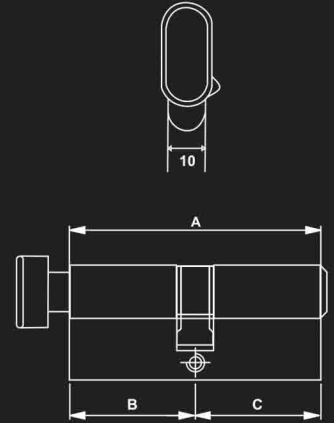
A	B	C
60	30	30



SPECIAL FEATURE

- * HIGH PRECISION AND HIGH SECURITY,** The inter- opening pin rate for double-pin combination of the mother-pin and son-pin, is lower than 0.005%
 - * Anti Drill * Anti Pick * Anti Bump**
 - * High Security combination of pin-in-pin**
- Comes with Security Card with a unique number to obtain duplicate key from company**

INTRODUCING FIRST TIME IN INDIA



HIGH SECURITY PIN IN PIN CYLINDER

Euro Profile Lock Cylinder (CK)

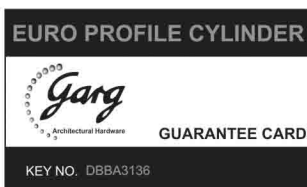
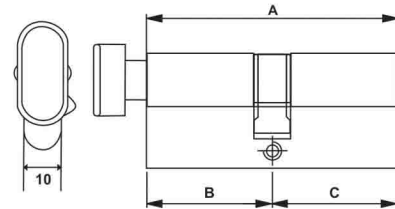
4



A	B	C
60	30	30



LLEH01.. Series



SPECIAL FEATURE

- * **HIGH PRECISION AND HIGH SECURITY**,
The inter- opening pin rate for double-pin combination of the mother-pin and son-pin, is lower than 0.005%
- * **Anti Drill * Anti Pick * Anti Bump**
- * **High Security combination of pin-in-pin**
Comes with Security Card with a unique number to obtain duplicate key from company